



# DGH1108BX-U2

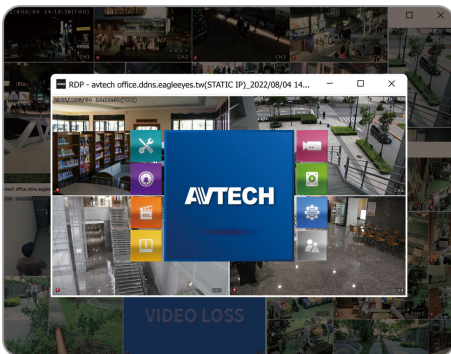
EaZy Networking  
Push Video / Push Status  
Easy-to-use Interface

9CH H.265 NVR

## Features

### Unlimited Channel Remote Live View

The ETU line of recorders allows you to see as many ETU devices simultaneously as needed without a CMS license. Its dedicated AVTECH desktop application lets you view all your ETU recorders from a single PC and screen becoming a suitable solution for all sizes of businesses and projects.



### Easy to Use Interface

The ETU line of recorders implements a fully redesigned interface for ease of use providing a plug & play experience for all AVTECH users. The ETU series allows you to avoid time-consuming setup and focus on what is truly important.



### 100% Made in Taiwan

AVTECH is well-known for its MIT product quality and innovation ability in the CCTV industry. We design and manufacture all of our products in Taiwan and all products are NDA- and TAA-compliant.



### Free & Quick P2P Cloud Service

Simply scan to complete internet setup via our cloud service, EaZy Networking, to save you all the troubles of complicated network configurations.

### Active Event Notification with APP

The app, AVTECH DVR, supports the ETU recorder line to send Push Video messages for alarm or motion events and Push Status messages for system events, such as video loss or HDD data removal.

### Remote Surveillance

Remote surveillance is available via the app, AVTECH DVR, and the AVTECH desktop program compatible with Windows OS only

## Specifications\*

Hardware		
Video Input		One LAN port (up to 9 IP cameras)
Video Output	HDMI	YES (4K2K)
	VGA	YES (1080P / Spot Monitor Supported)
Video Output Resolution		4K2K (3840 x 2160)
HDD Storage**		Either one 20TB SATA HDD installed in the recorder, or a disk array connected to the recorder via the eSATA interface
USB Port		USB 2.0 x 2
eSATA Port		Expandable with a SATA to eSATA cable
RS485 Port		YES
Ethernet	LAN port	1000 Mbps x 1
	Internet (WAN) port	1000 Mbps x 1
Software		
Video Compression Format		H.265
Audio Compression Format		G711
Live Display Mode	Local	9CH
	Remote	4CH
Playback Display Mode	Local	9CH
	Remote	4CH
Local Single Channel Playback		YES
Recording Mode		Manual / Event / Alarm / Schedule
Record Streaming		Dual
Recording Resolution		270 IPS @ 4K2K (3840 x 2160)
Recording Throughput		90Mbps
Pre-alarm Recording		YES
Quick Search		Time / Event
Event Notification		Push Video / Push Status / E-Mail
Security		Multiple user access levels with password
EaZy Networking		YES
Spot Monitor Setup		Call Monitor / Event Monitor / Live Monitor (VGA)
Free DDNS Service		YES
Network		
Protocols		DDNS, PPPoE, DHCP, NTP, SNTP, TCP/IP, ICMP, SMTP, FTP, HTTP, RTP, RTSP, RTCP, IPv4, UPnP, DNS, UDP, IGMP
ONVIF Compatible		YES

## Specifications\*

Remote Surveillance from PC		
Remote Access	Web browser	Windows Edge, Google Chrome, Mozilla Firefox & Opera on Windows 10 (and later versions) and Google Chrome & Mozilla Firefox on MAC
	PC program	Remote Desktop program for Windows OS
	PC program	32CH CMS software for Windows OS
Max. Online User		40
Mobile Surveillance		
APP	AVTECH DVR	
Compatible Devices	iOS & Android devices	
Push Video	YES (9CH)	
Push Status	YES	
General		
Power Source (±10%)	DC12V / 2A	
Operating Temperature	0°C ~ 40°C (32°F ~ 104°F)	
Operating Humidity	10% ~ 85%	
Dimensions (mm)***	260 x 235.7 x 48	
Net Weight (kg)	0.912	
Minimum PC Browsing Requirements	<ul style="list-style-type: none"> <li>• Intel core i3 or higher, or equivalent AMD</li> <li>• 2GB RAM</li> <li>• AGP graphics card, Direct Draw, 32MB RAM</li> <li>• Windows 10 and later versions</li> <li>• Windows Edge, Google Chrome, Mozilla Firefox &amp; Opera on Windows 10 (and later versions)</li> </ul>	
Optional Peripherals	USB Joystick (AVX102) / SATA to eSATA cable (PWSC07F120200)	
Certification	CE / UL (Power Adapter)	

\*The specifications are subject to change without notice    \*\* HDDs are optional.    \*\*\* Dimensional tolerance: ±5mm

## Rear Panel

